

Alvi Joensen

(Un)musical Parameters

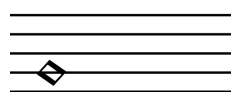
Performance notes

In this piece I have chosen to interpret the four pillars of traditional music, i.e. melody, rhythm, harmony and timbre, in a paradoxical way. I have chosen to use box-notation to avoid a having a sense of pulse, and I use very few exact pitches to leave a lot of room for improvisation by the musicians.

The piece can be performed with a conductor or using a clock showing the time indications.

The flutist alternates between alto flute and piccolo flute. The clarinettist alternates between bass clarinet (written with french notation) and Eb clarinet. The double bass part is written for a 4-string bass.

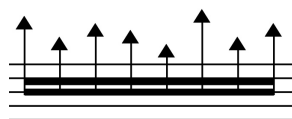
The score is in C, but with the octavation of the bass clarinet and the double bass.



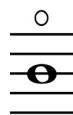
A note in the shape of a diamond is to be played without producing a clear and audible pitch.



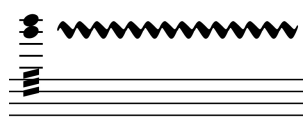
This type of fermata is short, meaning only 1-2 seconds.



Triangular noteheads indicate very high pitches of the musicians' choosing.



Circle above a note indicates that the should be played as an harmonic. In strings it indicates a natural harmonic.



A wavy line after an interval in the strings means playing one note glissando up and down between these two pitches, in this case tremolo.

Alvi Joensen

(Un)musical Parameters

Alvi Joensen (2022)

A

5" 10" 15" 20" 25" 30" 35" 40" 45" 50" 55" 1'00"

Alto Flute: Blow into instrument without producing a pitch (*pp*), *p*, Ordinario (*pp*)

Bass Clarinet in B \flat : Blow into instrument without producing a pitch (*pp*), Ordinario (*pp*)

Violin: Stroke bow without producing a pitch, Ordinario (*pp*)

Viola: Stroke bow without producing a pitch

Violoncello: Stroke bow without producing a pitch

Double Bass: Stroke bow without producing a pitch

1'05" 1'10" 1'15" 1'20" 1'25" 1'30" 1'35" 1'40" 1'45" 1'50" 1'55" 2'00" 2'05"

Alt. Fl.: Ordinario (*pp*), Vary intonation (*mf cresc.*), *ff*

B.Cl.: (*pp*), Vary intonation very slowly, at first barely audible (*p*), *ff*

Vln: (*pp*), Vary intonation very slowly, at first barely audible (*p*), *ff*

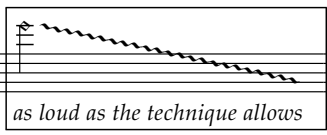
Vla.: Ordinario (*pp*), Vary intonation very slowly, at first barely audible (*p*), Vary intonation (*mf cresc.*), *ff*

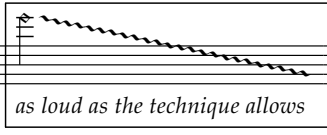
Vlc: Ordinario (*pp*), Vary intonation very slowly, at first barely audible (*p*), Vary intonation (*mf cresc.*), *ff*

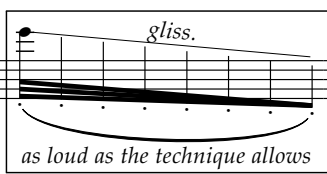
D.B.: Vary intonation very slowly, at first barely audible (*p*), Vary intonation (*mp*), *ff*

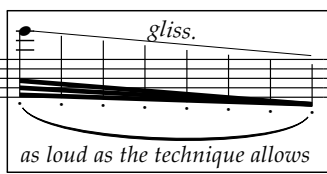
B

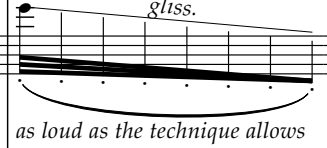
2'10" 2'15" 2'20" 2'25" 2'30" 2'35"

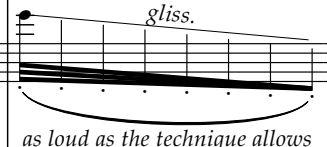
A. Fl.  Double-tonguing fast scales downwards from random high pitch without clear pitch
as loud as the technique allows

B. Cl.  Flutter-tonguing fast scales downwards from random high pitch without clear pitch
as loud as the technique allows

Vln  *gliss.* Jeté, bounce bow freely glissando downwards from random high pitch
as loud as the technique allows

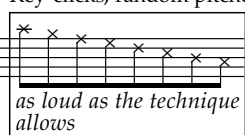
Vla.  *gliss.* Jeté, bounce bow freely glissando downwards from random high pitch
as loud as the technique allows

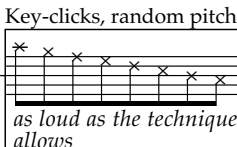
Vc.  *gliss.* Jeté, bounce bow freely glissando downwards from random high pitch
as loud as the technique allows

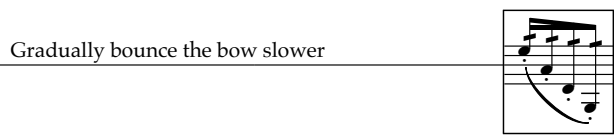
Db.  *gliss.* Jeté, bounce bow freely glissando downwards from random high pitch
as loud as the technique allows


C


2'40" 2'45" 2'50" 2'55" 3'00" 3'05"

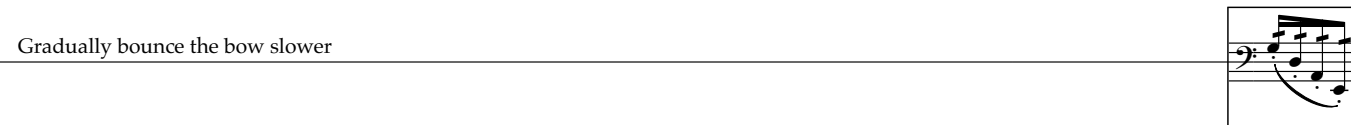
A. Fl.  Key-clicks, random pitches
as loud as the technique allows

B. Cl.  Key-clicks, random pitches
as loud as the technique allows

Vln  Gradually bounce the bow slower
Jeté, bounce bow freely across all open strings from high to low

Vla  Gradually bounce the bow slower
Jeté, bounce bow freely across all open strings from high to low

Vlc  Gradually bounce the bow slower
Jeté, bounce bow freely across all open strings from high to low

D.B.  Gradually bounce the bow slower
Jeté, bounce bow freely across all open strings from high to low

D

3'10" 3'15" 3'20" 3'25" 3'30" 3'35" 3'40" 3'45" 3'50" 3'55"

Alt. Fl. *muta in piccolo flute*

B.Cl. *muta in E \flat clarinet*

Vln *Pizz., draw finger across open strings, imitate 'Jeté'-articulation*
Imitate previous box, but with dampened strings and slowly getting slower

Vla *Pizz., draw finger across open strings, imitate 'Jeté'-articulation*
Imitate previous box, but with dampened strings and slowly getting slower

Vlc *Pizz., draw finger across open strings, imitate 'Jeté'-articulation*
Imitate previous box, but with dampened strings and slowly getting slower

D.B. *Pizz., draw finger across open strings, imitate 'Jeté'-articulation*
Imitate previous box, but with dampened strings and slowly getting slower

E

4'00" 4'05" 4'10" 4'15" 4'20" 4'25" 4'30"

Picc. *fff decresc. poco a poco*
 Flutter-tongue random high pitches, jump quickly between notes
ff decresc. poco a poco
 Random high pitches, jump quickly between notes (double-tongue articulation)
 Gradually play slower and lower pitches

Eb. Cl. *fff decresc. poco a poco*
 Flutter-tongue random high pitches in a jumping quickly between notes
ff decresc. poco a poco
 Random high pitches, jump quickly between notes (double-tongue articulation)
 Gradually play slower and lower pitches

Vln *fff decresc. poco a poco*
 Gliss. between these two pitches quickly with tremolo
 Gradually play the tremolo slower
 Start widening the interval downwards

Vla *fff decresc. poco a poco*
 Gliss. between these two pitches quickly with tremolo
 Start widening the interval downwards and gradually play the tremolo slower
 Lower the whole interval (change string when needed)

Vc. *fff decresc. poco a poco*
 Gliss. between these two pitches quickly with tremolo
 Start widening the interval downwards
 Lower the whole interval (change string when needed) and gradually play the tremolo slower

Db. *fff decresc. poco a poco*
 Gliss. between these two pitches quickly with tremolo
 Start widening the interval downwards
 Lower the whole interval (change string when needed)
 Gradually play the tremolo slower

F

4'35" 4'40" 4'45" 4'50" 4'55" 5'00" 5'05" 5'10"

Picc. *decresc. al niente* *muta in alto flute*

E♭.Cl. *decresc. al niente* *muta in bass clarinet*

Vln *Lower the whole interval (change string when needed)* *Completely legato* *Flautando*

Vla *Completely legato* *Flautando*

Vlc *Completely legato* *Flautando*

D.B. *Completely legato* *Flautando*

G

5'15" 5'20" 5'25" 5'30" 5'35" 5'40" 5'45" 5'50" 5'55" 6'00" 6'05" 6'10" 6'15" 6'20"

A. Fl. *Multiphonic of your choosing (many overtones)* *Switch between different multiphonics* *Gradually choose quieter multiphonics* *Blow multiphonics without getting a clear pitch (airy sound)* *as loud as the technique allows*

B. Cl. *Multiphonic of your choosing (many overtones)* *Switch between different multiphonics* *Gradually choose quieter multiphonics* *Blow multiphonics without getting a clear pitch (airy sound)* *as loud as the technique allows*

Vln *Excessive bow pressure and vary intonation slowly on a quarter-tone level* *Excessive bow pressure, start very slow glissando up and down within the interval in brackets (still varying intonation slowly on a quarter-tone level)* *Gradually slower bow strokes* *Stroke the bow so slow you do not get a clear pitch (quiet scratch sound)* *ff* *decresc. poco a poco (until scratching sound stops)*

Vla *Excessive bow pressure and vary intonation slowly on a quarter-tone level* *Excessive bow pressure, start very slow glissando up and down within the interval in brackets (still varying intonation slowly on a quarter-tone level)* *Gradually slower bow strokes* *Stroke the bow so slow you do not get a clear pitch (quiet scratch sound)* *ff* *decresc. poco a poco (until scratching sound stops)*

Vc. *Excessive bow pressure and vary intonation slowly on a quarter-tone level* *Excessive bow pressure, start very slow glissando up and down within the interval in brackets (still varying intonation slowly on a quarter-tone level)* *Gradually slower bow strokes* *Stroke the bow so slow you do not get a clear pitch (quiet scratch sound)* *ff* *decresc. poco a poco (until scratching sound stops)*

Db. *Excessive bow pressure and vary intonation slowly on a quarter-tone level* *Excessive bow pressure, start very slow glissando up and down within the interval in brackets (still varying intonation slowly on a quarter-tone level)* *Gradually slower bow strokes* *Stroke the bow so slow you do not get a clear pitch (quiet scratch sound)* *ff* *decresc. poco a poco (until scratching sound stops)*